

Welcome



Welcome

Welcome to our special drop-in event that shows you our masterplan for the hospital site. Come and look around and let us know what you think.

What is the Masterplan?

The masterplan sets out the Trust's current thoughts for how the hospital could be developed to meet the known requirements now as well as providing space for the future.

The Trust has the once in a generation opportunity to improve its services through the redevelopment of the Trust HQ and the former Damers School. The Trust is working in partnership to consider the options and opportunities to raise income and contribute to the cost of the clinical facilities building work.

The Proposal

We have been working on a new masterplan for the hospital. As part of this, we are hoping to expand our Emergency Department (ED) and Intensive Care Unit (ICU) as well as establish an Integrated Care Hub as part of a long-term project to deliver the recommendations of Dorset's Clinical Services Review.

To enable the masterplan and in order to free up space on the hospital site for the development of clinical facilities, the Trust is proposing to build a multi-storey car park to improve parking for patients, visitors and staff.



Delivering the project



About the Trust

Dorset County Hospital works with health and social care partners to be at the heart of improving the wellbeing of its communities.

PRIME

About Prime

Prime enables health and care providers to make the most of their spaces so all of us can experience better care. We unlock complex estate management challenges with leading industry-specific legal, financial and property planning solutions, and work with your partners to see the projects through development to delivery.



About Stripe

Stripe are structural engineers and one of the UK's leading experts in car park structures with many millions of pounds worth of projects successfully designed and delivered, ranging from New Build multi-storey car parks to designing layout changes on a simple surface car park.

Ryder

About Ryder

Ryder is an international design practice with over 180 designers across three continents. The organisation has supported many NHS Trusts across the country by supporting and developing estate masterplans.



Location



NHS
Dorset County Hospital
NHS Foundation Trust



Challenges



Why do we need a masterplan?

Our Emergency Department now deals with twice as many patients as it was originally designed to cope with. Demand is only going to rise in the future, so we need to expand and redesign the department to make it fit for purpose.

Similarly, our Intensive Care Unit needs to be expanded so we can cope with the increased demand and provide care in the best environment possible.

The Integrated Care Hub will bring staff and services together on site to allow us to get patients home safely in a timely way as well as help avoid unnecessary hospital admissions.

Building the multi-storey car park will free up the space we need on our site to expand the ED and ICU and create the Integrated Care Hub.

Masterplan



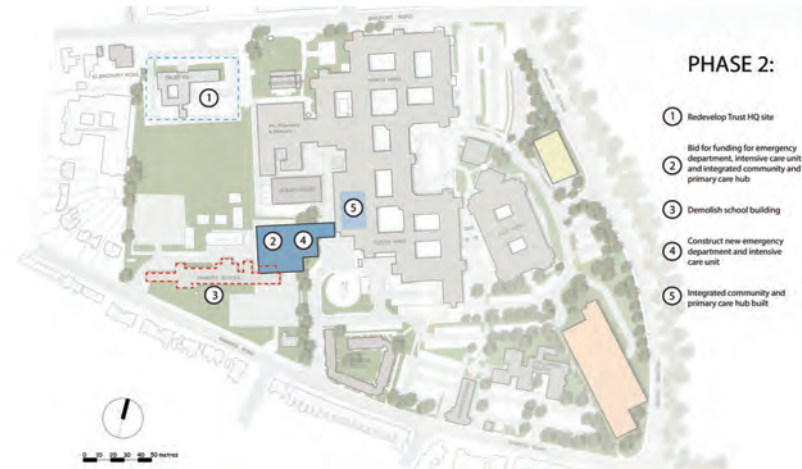
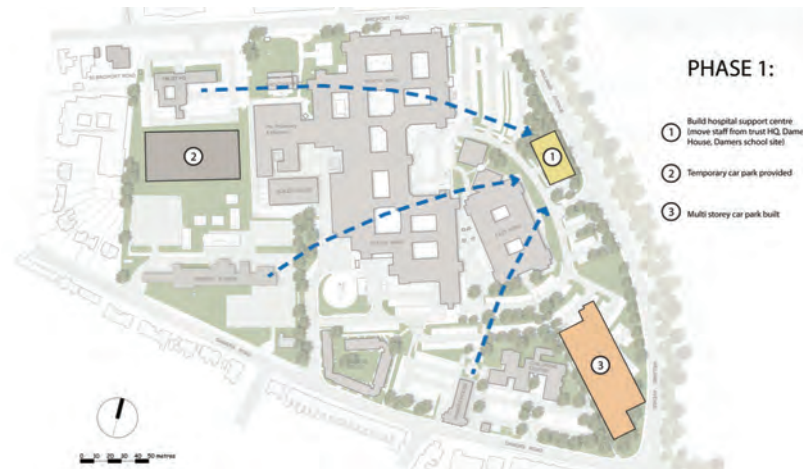
KEY:

- Existing Buildings
- Hospital Expansion
- Residential/Health/Community
- Hospital support centre
- New multi storey car park

Zoning plan



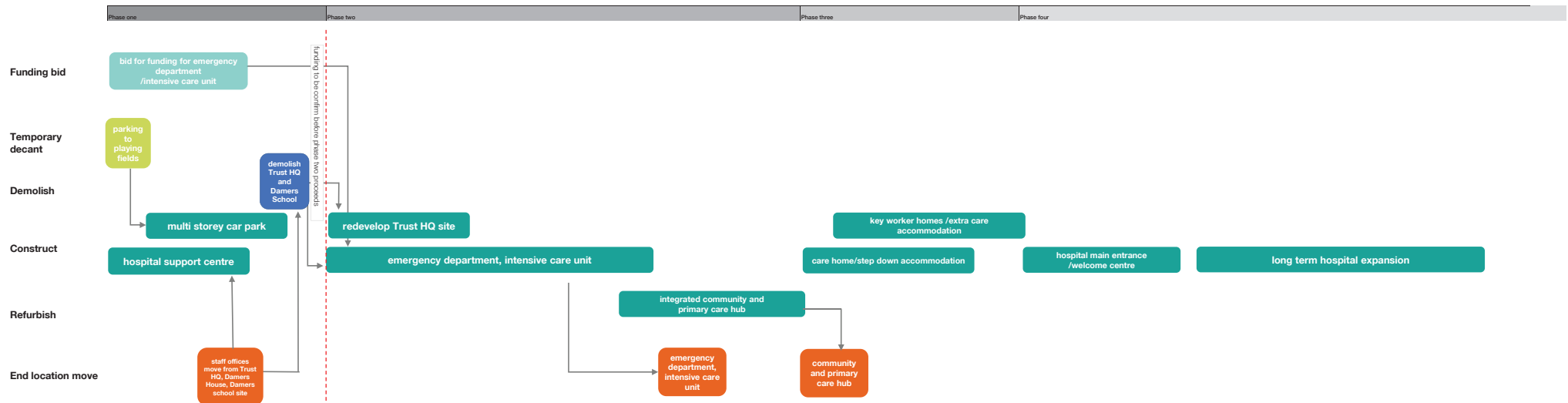
Phasing plans



Phasing programme

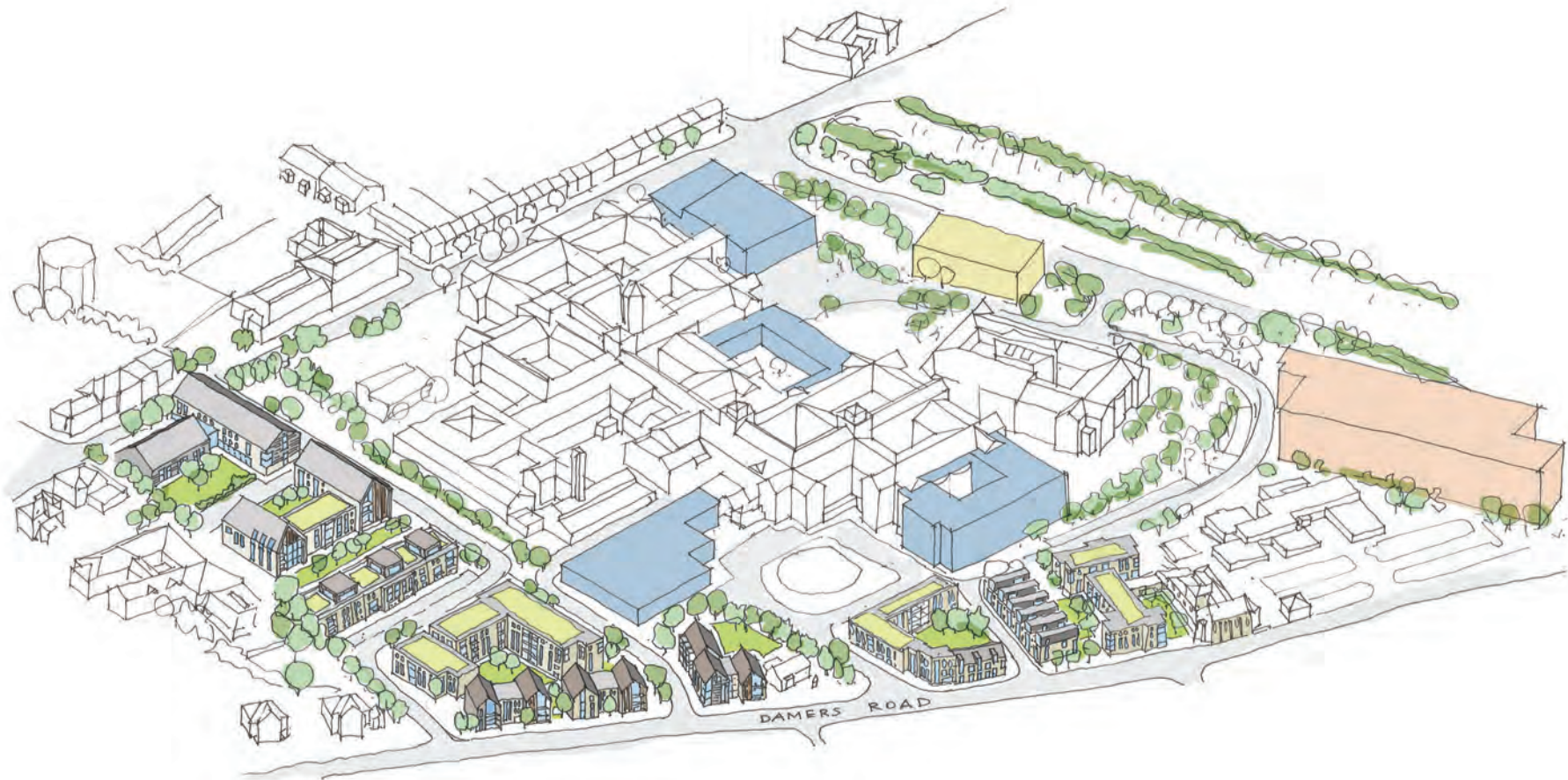


Dorset County Hospital draft programme



Programme subject to change, time frames to be confirmed based on funding and planning approvals

Masterplan visual



Site analysis



What have we considered in the masterplan?

- Emergency Department expansion
- Integrated Community and Primary Care Services Hub
- Mixed-use developments on the Damers Road (Trust HQ & Former Damers School) site
- Elective surgery and day surgery improvements and Private Patients Treatment Centre (PPTC)
- Main Entrance improvements
- New Trust office space
- Reablement facility
- Renal Department extension
- Residential units
- Improved car parking
- Improved wayfinding across the hospital

Site movement



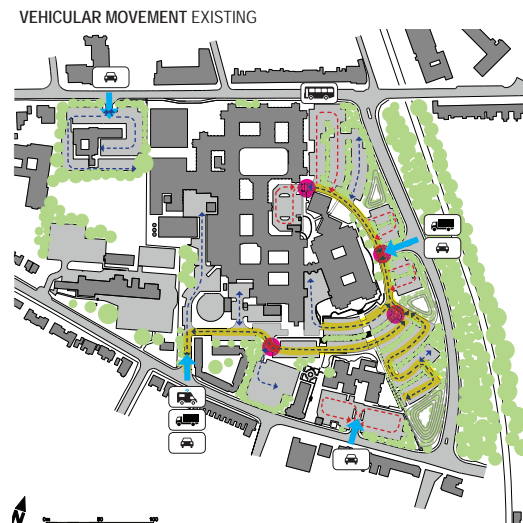
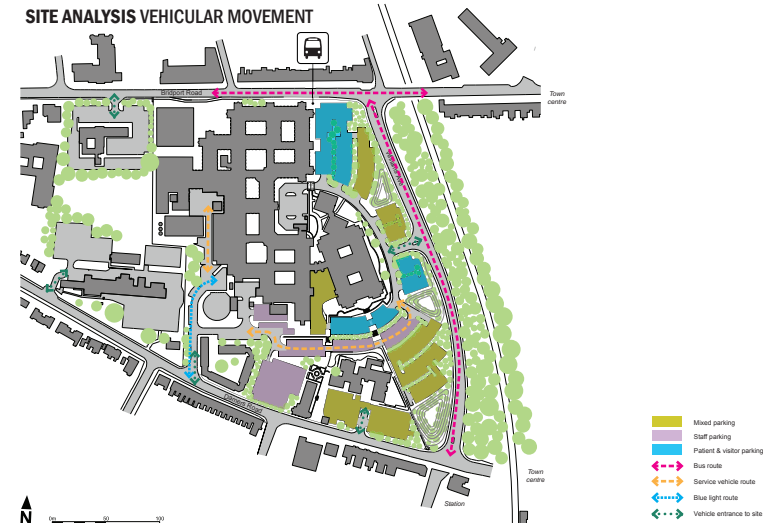
Introducing the car park



There are two very important elements that have created the need to consider a new car park at the hospital.

Firstly, to enable the Masterplan we need to reduce space required by 'land-hungry' vehicle parking. This will allow the development of the needed improvements to the Emergency Department and the Integrated Community and Primary Care Services Hub, as well as a better use of other land around the hospital for other future developments.

Secondly, there are existing parking pressures at the hospital. These affect how our staff, patients and visitors feel and is leading to missed or late running appointments. A new car park and improved wayfinding at the hospital will help to improve this.



Current parking challenges



47%

of staff with permits
felt it was difficult to
park for work



32%

of staff with permits
sometimes have
to park outside the
hospital site



54%

of staff who drive
without a permit
would like one
if they were made
available



87%

of staff who drive
without a permit
are parking in local
streets instead



94%

of drivers felt it
was difficult to
park on site



90%

of those who
parked outside the
site did so because
they could not find a
space on site



21%

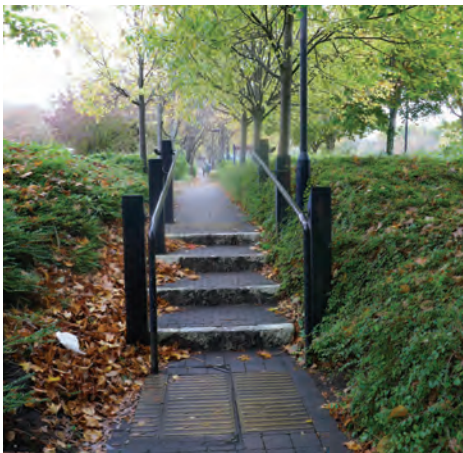
would consider
using a different
hospital where
parking was easier
due to difficulty
parking at DCH



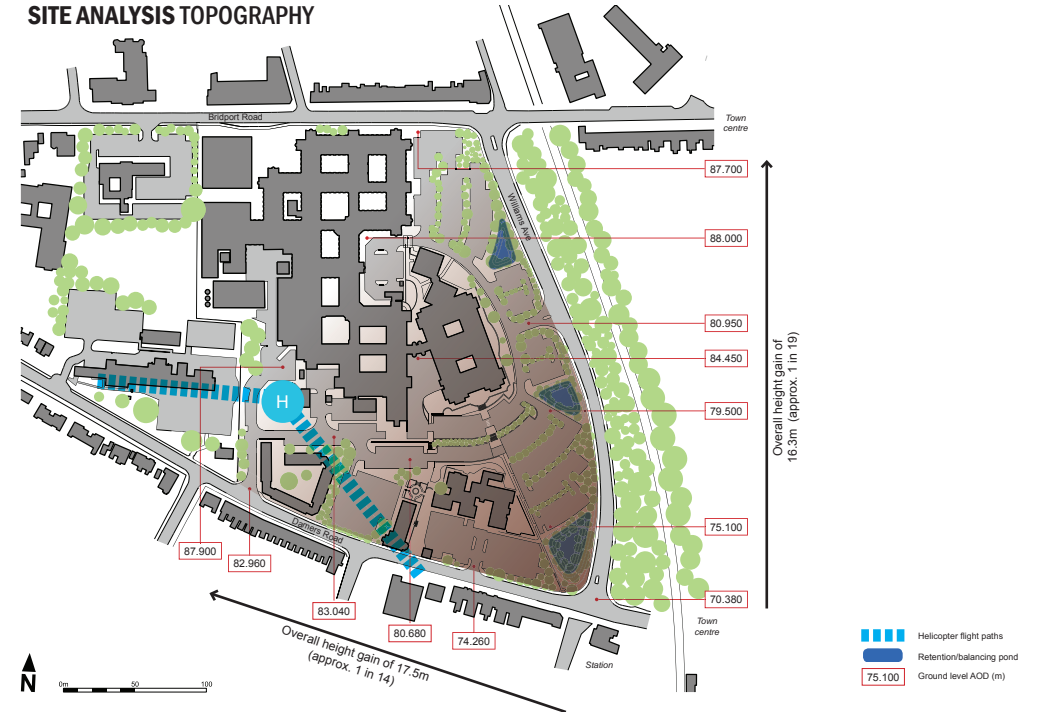
32%

of drivers had
been late to an
appointment due
to difficulty
parking

Technical matters – Topography



SITE ANALYSIS TOPOGRAPHY



Technical matters



Drainage

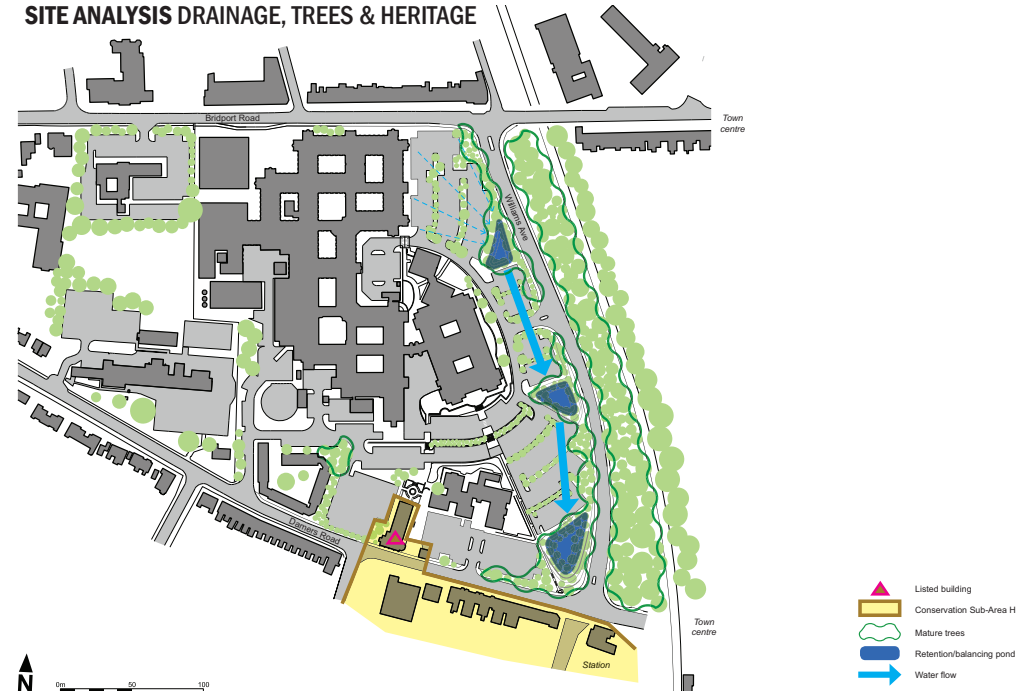


Ecology and trees



Heritage

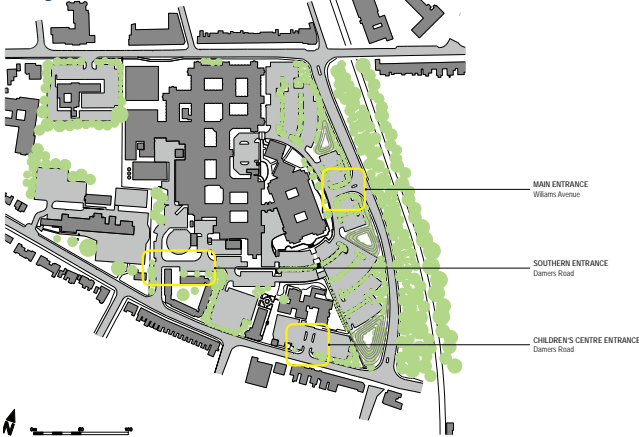
SITE ANALYSIS DRAINAGE, TREES & HERITAGE



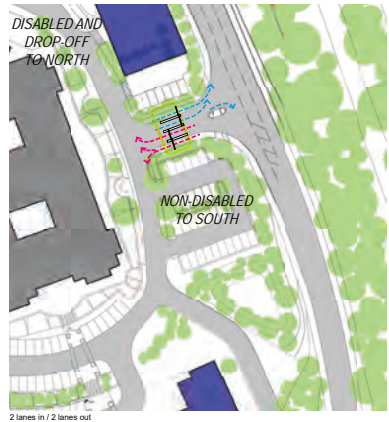
Highways and access



Key areas



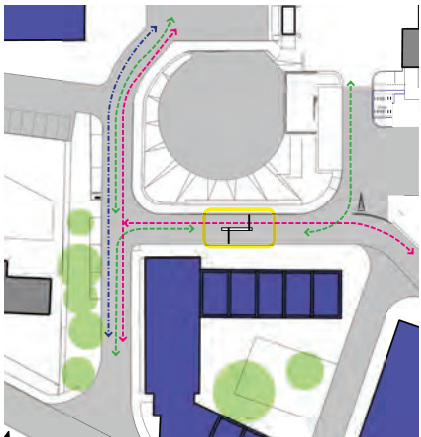
Main entrance



Entrance barriers moved away from internal 'give way' line to allow room for vehicle to pause before turning without blocking internal roads.
Anticipated vehicle flow: 350 vehicles per barrier per hour (10/11 seconds per vehicle).

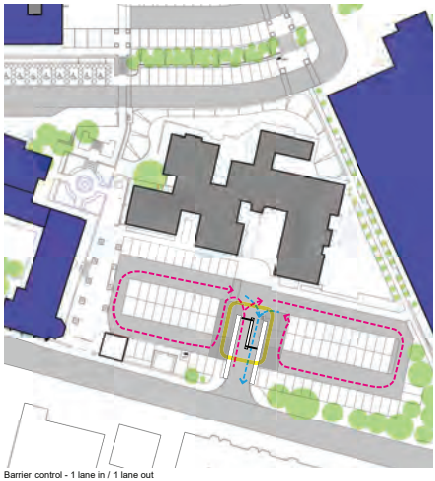
- > Cars in
- > Cars out
- Barrier location

Damers Road entrance



- > HGV movement
- > Car movement
- > Ambulance movement
- Barrier location

Children's Centre entrance

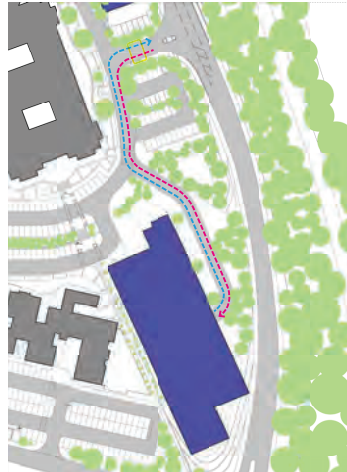


- > Cars in
- > Cars out
- Barrier location

Site plan

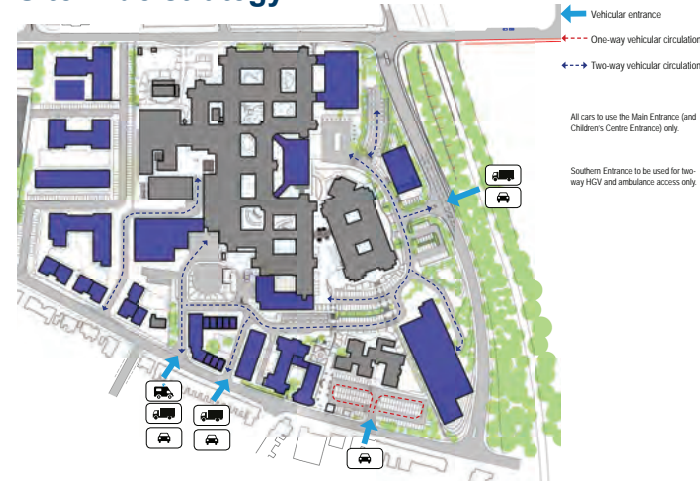


MSCP Access

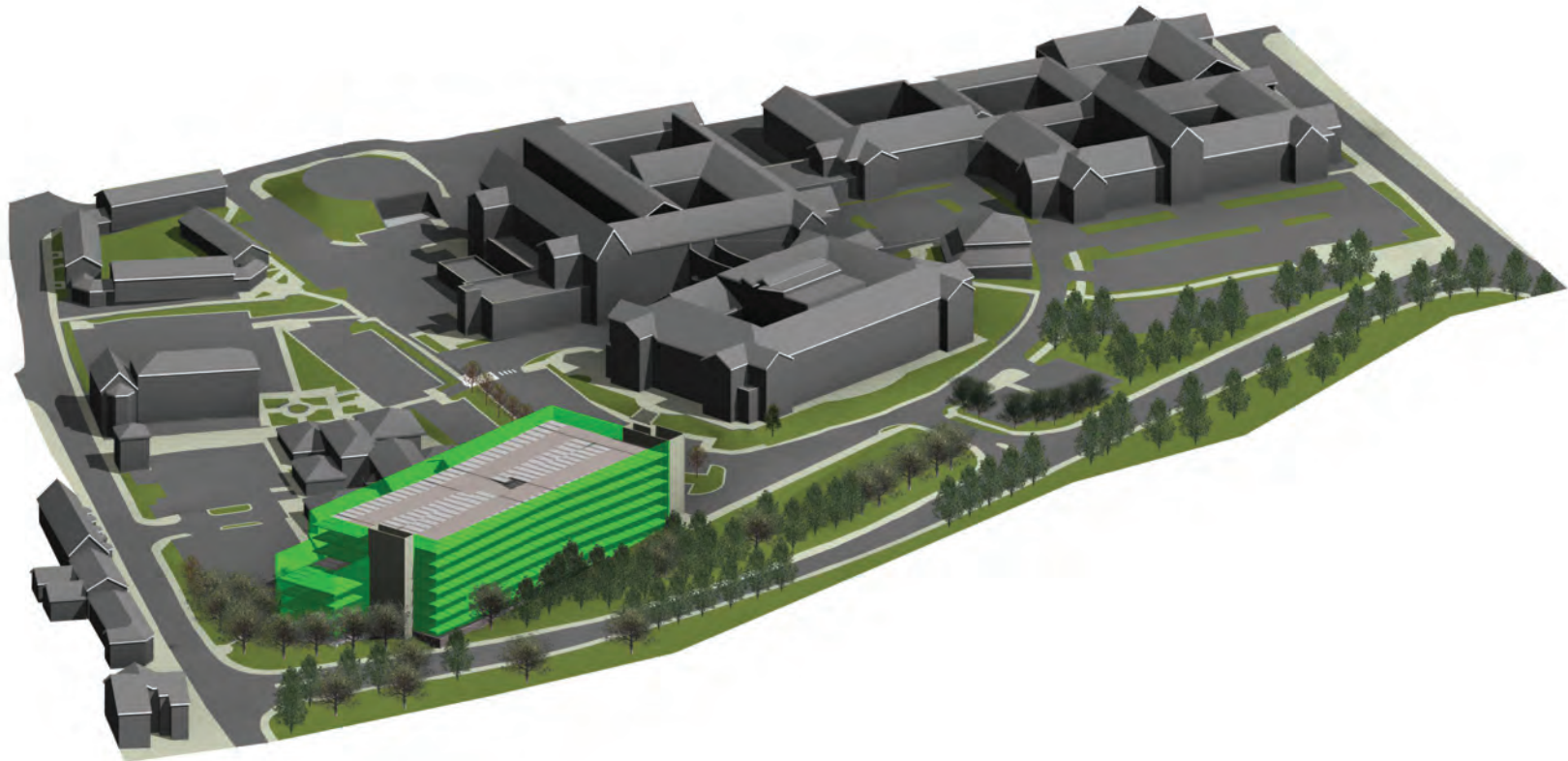


---> Cars in
---> Cars out
Barrier location

Site wide strategy



3D View



Wayfinding



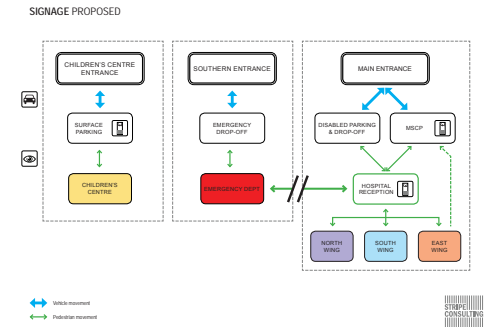
New car park technology



Clearer vehicle signage



New pedestrian signage example



New signage strategy



New barrier system



New pay on exit machine

Benefits



1070

Spaces at DCH



New payment
systems
(Pay on exit)



Spaces in
the MSCP:
650



Improved
Wayfinding



Dedicated drop
off area



Dedicated area
for blue badge
holders



Electrical vehicle
charging points



Staff stress
reduction



Reduction of
parking on
local roads



Reduction in numbers
of no-shows and
late arrivals to
appointments as a
result of parking

MSCP appearance options



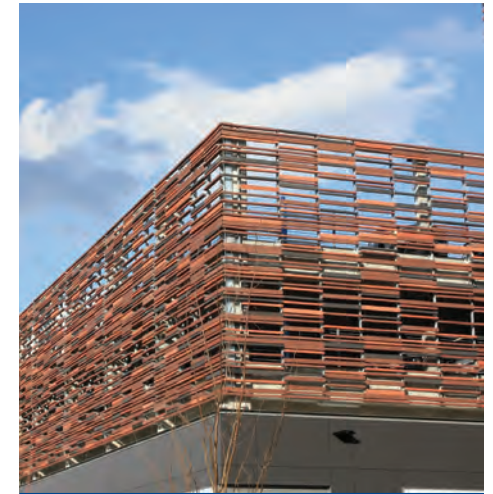
Mesh panels



Perforated and solid panels



Powder coated metal battens



Terracotta battens

Frequently asked questions



Q: When would work start on the new car park?

A: Feedback from our public consultation event today will help us develop our final plans over the coming weeks and we hope to submit a planning application to Dorset Council in late August 2019. If the application is passed, we will be looking to start construction of the car park in July 2020.

Q: How long will it take to build?

A: The construction work is expected to take around 15 months to complete, subject to approvals. The car park should be operational by September 2021.

Q: Where will staff and patients/visitors park while the new car park is being built?

A: To allow the construction to start on the new multi-storey car park, temporary parking will open on the former Damers School playing fields.

Q: Will the car park block light to residential properties nearby?

A: Light will not be blocked to any of the properties due to its location and distance from the surrounding properties.

Q: Will the car park be for patients or staff?

A: The car park will be for both staff and patients/visitors and it will be shared to make the most efficient use of space. It will result in more parking spaces for both staff and visitors.

Q: Who is paying for the car park to be built?

A: This project is being funded through our DCH Estates Partnership with Prime and not by the NHS. Therefore, money and resources are not being taken away from patient care and the car park will enable the masterplan to be achieved without impacting on the hospital and its services.

Thank You!



Next Steps

Feedback from this event will help us to develop our final plans and we hope to submit a planning application to Dorset Council in the next few weeks.

Thank you for taking the time to join us today

If you have any feedback on the new car park we would like to hear your thoughts. You can speak to a member of the team to share your views and ask any questions or fill in one of our feedback forms before you leave.

Alternatively, if you would like to send in comments at a later date, please email masterplan@dchft.nhs.uk by 31 July 2019.

