



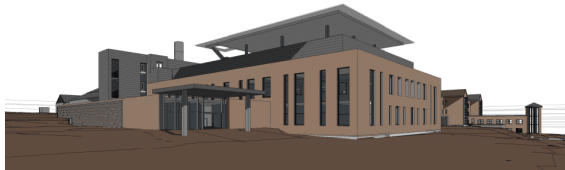
Making Dorset County Hospital bigger

Why make the hospital bigger?



Dorset County Hospital sees lots of people every year.

It **needs more space** to fit everyone in and to make sure people get the care they need when they need it.



What a new Emergency Department and Critical Care Unit may look like

The hospital would like a new **Emergency Department** and new **Critical Care Unit** for people who are very unwell.

We would like to build other things too.



One is a **new entrance** to welcome people. This would make it **easier to find your way around** the hospital. There would be **space to sit down, get something to eat and drink**. There would also be **shops**.

This will take a long time to build.

Letting us know what you think of our plans



We want you to **feel safe and happy** when you visit us so it is important for us to **find out what you think**.

Your Future Hospital

NHS
Dorset County Hospital
NHS Foundation Trust



We would like to **talk to you and carers** about what **things would make you feel welcome** inside these new buildings.



We need to find out if we are allowed to build them first.



If you would like **more information** about our plans, please visit our website-
www.dchft.nhs.uk/your-future-hospital

How to get in touch

If you have any questions or would like to get in touch then please email us.



Email: yourfuturehospital@dchft.nhs.uk

Thank you

